
Review on S-Shape Characteristics of Pump Turbine for Hydropower Generation

Daniel Adu^{*}, Jinfeng Zhang, Yujian Fang

National Research Centre of Pumps, Jiangsu University, Zhenjiang, China

Email address:

adudaniel39@yahoo.com (D. Adu)

^{*}Corresponding author

To cite this article:

Daniel Adu, Jinfeng Zhang, Yujian Fang. Review on S-Shape Characteristics of Pump Turbine for Hydropower Generation. *American Journal of Electrical Power and Energy Systems*. Vol. 6, No. 4, 2017, pp. 43-50. doi: 10.11648/j.epes.20170604.12

Received: May 23, 2017; **Accepted:** June 26, 2017; **Published:** July 26, 2017

Abstract: This paper presents and discussed the results of an experimental investigation of S-shape characteristics of pump turbine. An experimental study of pump turbine has been carried out by many researchers to study its characteristics. By using the experimental results of tested pump of some previous researchers, The Numerical analysis and Experimental studies on the S-shaped characteristics of a pump turbine model, Impact of Parameters on S-shaped characteristics, mechanism of the internal flow of pump turbines as well as measurements of pressure fluctuations on reduced-scale model pump-turbines have been discussed.

Keywords: Pump Turbine, Pressure Fluctuations, S-Shaped Characteristics, Parameters

1. Introduction

The ability to store electricity is the main problem in electricity production to a large extent based on renewable energy. In reality, as we all know, these sources are sporadic and non-programmable, so it cannot meet the electricity needs of users. One of the most promising and useful means for power storage today is that of the pump storage plants characterized by a good dynamic (fastest way of altering from pump mode to turbine mode) with the provision of good energy. reverse pump turbine (RPT) is the utmost communal mechanical device approved in the new generation of pumped-hydro energy storage it is usually preferred due to their profitability compare to other technical requirements Even though quite a lot of problems in the grid might be answer by Pumped Storage, pump-turbines also desires regular and quicker changes among pumping and generating modes outspreading the operation of the machine at off-design conditions. Nevertheless, pump turbine design comes from the outcome of a cooperation amongst the conflicting targets such as performance of pump and turbine, regulatory capacity, efficiency and cavitation behavior. The design criteria, which are more focused on the behavior of the pumping function, such as

the increase in the depth of the flow field at the depth of the flow field can result in the operation of the unstable region (called the S-shaped region) which doesn't have impact on Francis turbines functioning at the same conditions [1]. In view of the strong fluctuation of the torque caused by the occurrence of instability in the region, the RPT can be affected by a sudden change in the function (from turbine to pump and vice versa), along with substantial fluctuations of the head and flow rate through conceivable self-excited vibrations [2] otherwise water hammers emphasizing not the mechanical equipment alone but the entire power plant [3]. What brought about this S-Shaped characteristic appear to be in relation with the development of vortexes in the pump-turbine partly blocking the flow [4-6]. Established from Some studies indicate that the advancement of stall cells gyrating in the runner channels at 5070% of the rotational frequency of the runner [7-10].

1.1. Experimental Studies

The experimental study of the mechanism of the internal flow of pump turbines comprises of velocity fields measurements and visual observations as well as measurements of pressure fluctuations on reduced-scale model pump-turbines. Owing to the complication of the

model, it is necessary to measure / monitor general special techniques. Experimental gadget for flow visualization and measurement of the pressure distribution of a model pump-turbine with S-shaped characteristics was developed by [11] particularly situations with no-flow. For transparent visualization of flow cells, and the use of laser Doppler velocimetry (LDV) to measure the convenience of transparent materials. During the experiment, no application of the rotor cover was done but adjusted the free surface of water directly beneath the upper surface of the rotor disk. Analysis was carried out on the impact of the direction of rotation and guide vanes on the radial distribution of static pressure. Observation was made on the flow patterns in the rotor and the draft tube. it was proposed that appropriate selection of the reaction rate of a pump-turbine, that is, the proportion of the total static head in the rotor to the overall head was required to stabilize the operating mode of the turbine. [12] Series of observations on the internal flows in a small-scale low-specific-speed model pump-turbine by means of S-shaped characteristics was performed by [13, 14,

15, 16, 17,] The model pump turbine runner, guide vane and the draft tube becomes clear. There was a removal of the band of the runner for pressure measurements expediency. Addition of Aluminum flakes was made to show the internal flow patterns. Power station pumps are the most important in the development of free carbon dioxide in renewable energy and the safety of sustained growth in power supply components. In addition, the pump turbine is the principal element of the entire power station, which has significant impact on the network. As The performance of the turbine constantly display important steeper flow characteristics than the conventional high head Francis turbines having very similar specific speed in name of S-shaped profile for Q 11 vs. N 11 (Figure 1) this is due to the fact that there is a cooperation between an optimal pump and an optimal turbine in the design of a pump turbine. For instance, the water hammer rises sharply due to the rapid changes in the flow rate as the turbines gets closer to the runaway speed. This can lead to serious problems frequency governing, particularly in idle speed [6].

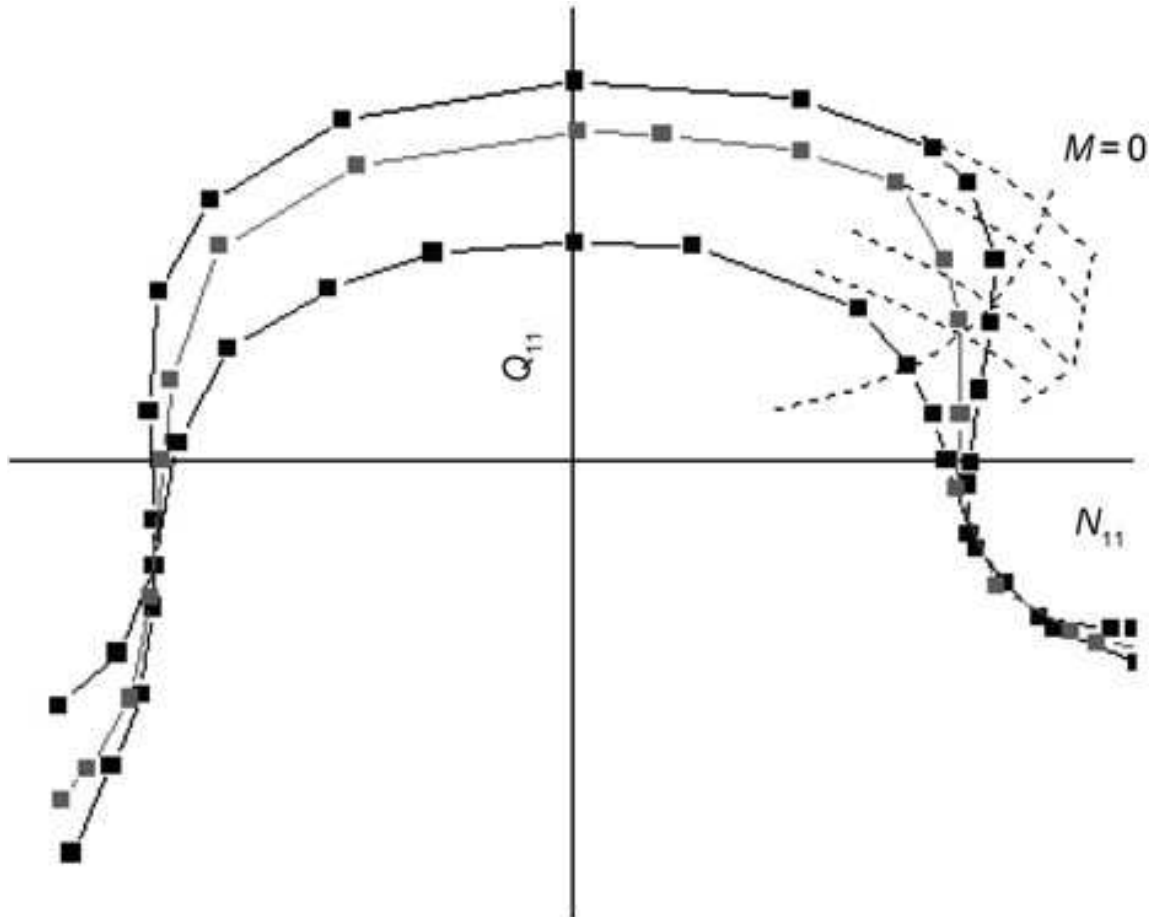


Figure 1. Four quadrant characteristics of the pump turbine model [6].

Experimental research was conducted on the flow hydrodynamics of a low-specific-speed pump-turbine model under off-design operating conditions, including runaway and S-shaped turbine brake curves by [9, 18]. they also performed high-speed flow visualizations in the vaneless space amongst the runner and the guide vanes as well as Wall

pressure measurements in the stator. It was pointed out that the pressure fluctuations in the guide vane channels stood very severe than in the spiral casing there was a rise of the pressure fluctuation around the S-shaped characteristics as well as the reverse pumping mode. The results are given away in Figure 2.

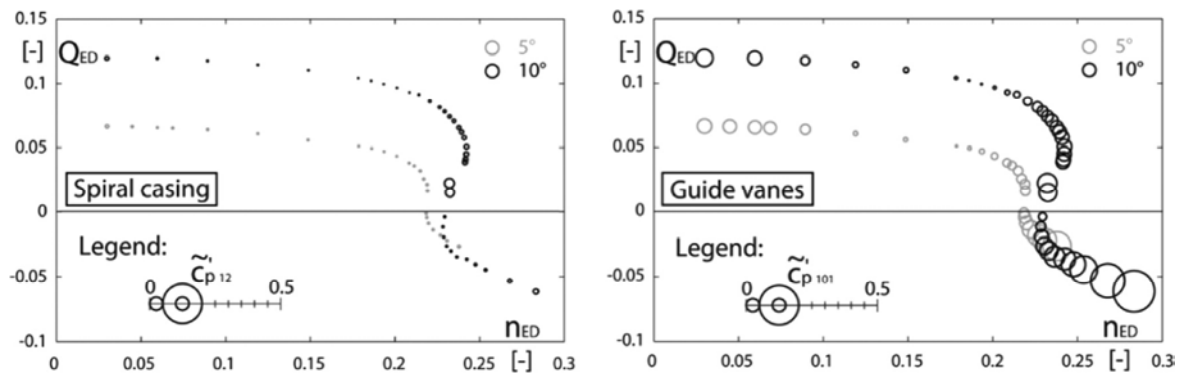


Figure 2. Pressure fluctuations standard deviation (STD) in spiral casing (left) and guide vanes (right) [9, 10].

1.2. Experimental Analysis of S-Shape Characteristics

A lot has been dealt with on this phenomenon in many previous studies [18, 19]. And experimental studies been done [20] to measure the characteristics of flow with the use of PIV and image processing technology. It has been concluded that the instability can be attributed to the large-scale vortex structure at the leading edge of the runner vanes. This conclusion was made Based on the analysis of the instability relationship between the external characteristics and the internal flow. Likewise, there was a study on the beginning and the development of flow instability [21]. [22] measured in S-shaped zone the thorough pressure fluctuations among wickets and concluded that the blocking flow could be caused by the stall in runner channels. They gave explanations for the S-shaped curve formation and could Hypothetically be one or more of the following: a) Large ratio of diameter; b) heavy forward inclined vane; c) the design of leading edge in turbine mode. Nevertheless, the phenomenon of instability is still a major problem in engineering practice. With the aim of solving this problem meticulously, we must depend on the enhancement at the design stage. Therefore, a consistent numerical simulation method is required. Even though the traditional stoppage flow simulation based on the K-type turbulence model is the state of the art to turbomachinery [23-24], the flow on off-design conditions couldn't still be predicted by it comparable to the S-shaped zones it still cannot predict the flow on off-design conditions like the S-shaped zones. For instance, [the turbine characteristics of a reversible pump turbine was predicted [25]. yet, the accuracy Wasn't very good nearby runaway point, the prediction of off-design conditions difficulty is as a result of the flow complexity for example the massive flow separations caused by large incident angle and the detached, reattached boundary layer flow and rotating stall also. In addition, the flow variable's gradient could be so large to the extent that common algorithms are not very appropriate. So, more advanced turbulence model then algorithm should be discovered to solve this type of flow. Simulations of the stable and unstable flow on the runner

based on the characteristics of S-shaped was carried out by. [26] They took the Time-changing in- and outflow into the vaneless space from the runner. there may perhaps be around 50% of the main flow to the turbine of the band of the fluctuations near runaway. The local vortices forming in the runner channels close to the leading edge possibly will be well thought-out as the source of the instability, also utmost of the energy dissipation for operating nearby runaway happened in the vaneless space flanked by guide vanes and the runner. As shown by the In-depth flow analysis results. [27] carried out numerical studies on the flows of two model pump-turbines and it was considered that zero torque to the shaft was achieved by the balance between the pumping and the power generation, at the speed no load condition. The contact amongst pumping, namely, the back flow at the runner inlet as a result of high centrifugal forces, also generating, that is, rendering of a complex local flow field occurred due to the comparatively high-velocity inflow outside the pumping region. the rainbow-colored back flow region at the runner inlet by a contour plot of radial velocity, in addition to the time-dependent variations in the amount then area of the back flow are displays in Figure 3. and Figure 4. methodically shows the basic characteristics of these flows based on SSTk ω RANS turbulence model. Research was carried out by [28] on the flow patterns in a model pump-turbine runner on a reverse pump operating conditions in a diverse guide vane opening. There was an observation on the Vortex structures nearby guide vanes as well as stay vanes. Additional comparison was made among the internal flow features at turbine, no-load, then reverse pump operating points at the same guide vane opening. They recommended that under runaway condition, the speed no-load instability was caused by the dominant vortex nearby the runner inlet. [29] comparable analyses were made by. [30] and [31] with quite a lot of dissimilar guide vane openings. Confirmation was made on the Reduction in the strength of the stationary vortex structures in the vaneless space, along with increase of separation flows at the runner inlet, on runaway operating points with increasing guide vane opening.

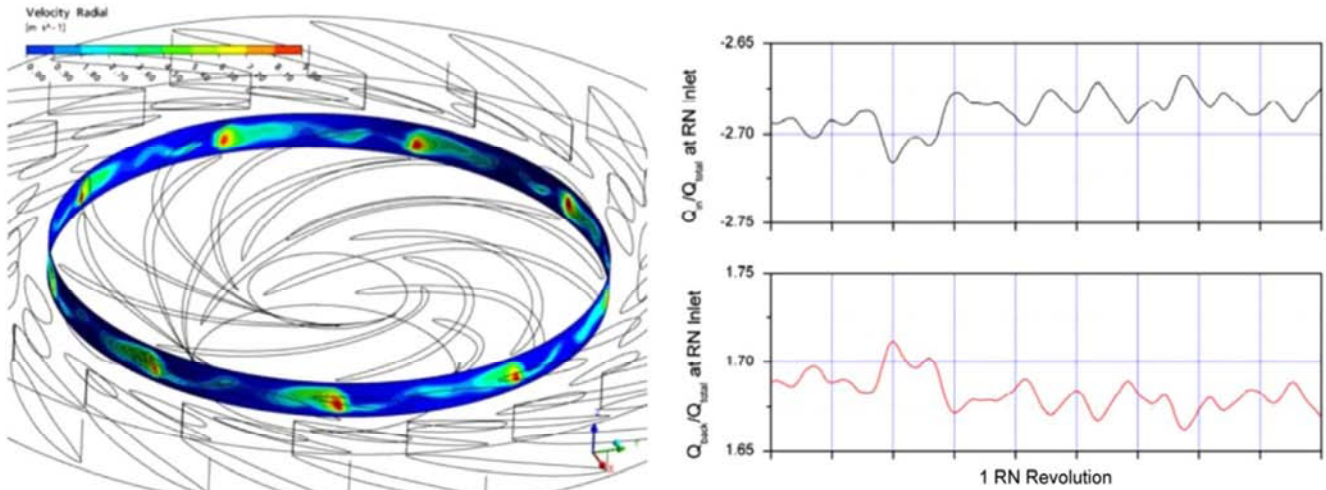


Figure 3. Back flow behavior (left) and time dependence (right) at pump-turbine runner inlet at speed no-load [27].

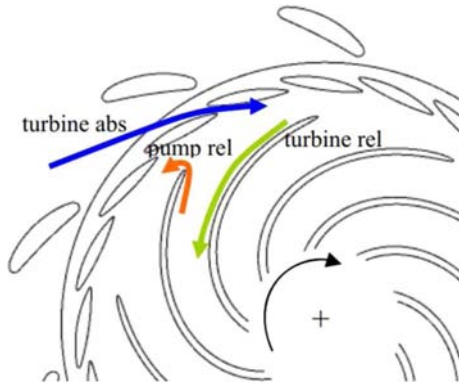


Figure 4. Basic flow features at pump-turbine runner inlet at speed no-load [28].

2. Pump Turbine Specifications

According to Wang L Q, et al, the structured grid can be used for the entire domain and is separated into four parts namely; a spiral casing, vanes (stay vanes and guide vanes), runner and draft tube. All components are connected together through a fluid to a fluid interface. mesh refinement at the interfaces was Performed to facilitate information upstream and downstream to be more precisely transferred. With the purpose of capturing the boundary flow separation, boundary refinement of guide vanes, stay vanes as well as runner are giving special attention. Figure 4 and figure 5 below shows A vertical view of the whole grid and the enlarged grid for the runner zone respectively [6].



Figure 5. Mesh generation with different parts identified by different colours [6].

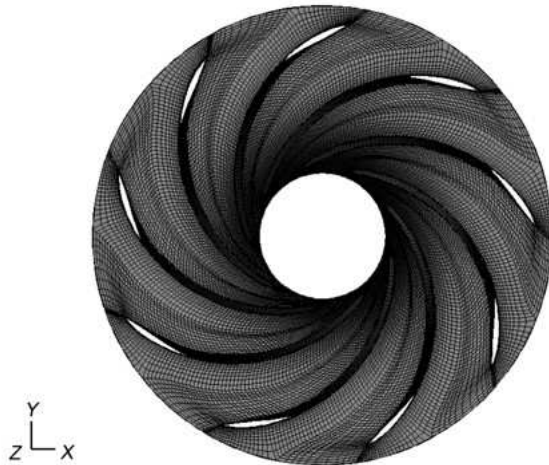


Figure 6. Grid for runner domain (H/J/L/C topology applied to blade). [6].

Experiment was performed by combining PIV and static pressure distribution measurements, on a model pump turbine in the S-shaped characteristics region by [32, 33, 34, 35]. By means of engaging a spiral casing with an optical access, two transparent guide vanes, and a window in the support ring of the guide vanes, the velocity in the vaneless space between the runner and the guide vanes was measured using two-dimensional ensemble averaged PIV. PIV measurements in

one radial and three axial normal planes were made. Through the application of coordinate conversion of the PIV results on different measurement planes, regions of recirculation and backflow may perhaps be partly noticed.

Impact of Parameters on S-Shaped Characteristics

Sequence of research was carried out by [36] and [37, 38] on the runner geometry effect on the S-shaped characteristics. They observed that there is a major influence on the steepness characteristics by the diameter and speed of rotation. A comprehensive parametric research on the impact of runner leading edge of a pump-turbine on the performance curve was accomplished by [38] in Identifying the complex flow patterns at the runner inlet on the S-shaped characteristics. [39] projected a start-up plan for hydraulic turbines prone to S-shaped characteristic, based on a gain scheduling technique from finite horizon predictive control. Below are the summary of some parameters of pump-turbines which impact the S-shaped characteristics

- (1) Guide vane opening at speed no-load conditions, the slope of the Q_{11} n_{11} characteristics generally goes up with cumulative guide vane opening. Hence, the risk of unsteadiness increases with decreasing head [37].
- (2) Runner geometric parameters, table two below summarizes the study on the effect of the runner geometric parameters on the S-shaped characteristics.

Table 1. The Parameters which influence S-shaped characteristics.

References	Pump-turbine	geometric parameters examined with results
Zhu et al. [40]	Model pump-turbine (corresponding prototype Hr $\frac{1}{4}$ 259m, Pr $\frac{1}{4}$ 255MW)	Negative blade lean lead to a weaker S-shaped characteristic
Nielsen et al. [36] and Olimstad et al. [37,38]	(ns $\frac{1}{4}$ 114) Low-specific-speed model pump-turbine	Higher values of diameter and speed of rotation gave steeper characteristics; increase the radius of curvature on the pressure side of the leading edge in turbine mode, decrease the inlet radius, increase inlet blade angle, or increase the length of the blade, lead to more stable runner
Yin et al. [41]	Medium-specific-speed pump-turbine	To some extent higher $D_1 = D_2$ then $B=D_2$ values required a stable performance curve
Liu et al. [42]	Model for Xianju pumped storage power station (375 MW)	Number of runner blades, wrapping angle of the blade, diameter ratio between outlet and inlet, inlet and outlet blade angles, and the flow channels

Sequence of research was carried out by. [36]. [37, 38] on the runner geometry effect on the S-shaped characteristics. They observed that there is a major influence on the steepness characteristics by the diameter and speed of rotation. A comprehensive parametric research on the impact of runner leading edge of a pump-turbine on the performance curve was accomplished by. [1] in Identifying the complex flow patterns at the runner inlet on the S-shaped characteristics. [43] projected a start-up plan for hydraulic turbines prone to S-shaped characteristic, based on a gain scheduling technique from finite horizon predictive control.

3. Anti-S Characteristics Governor

An intelligent governor provided with an anti-S characteristics control was established for improving the performance of transient of the pump turbine beneath load rejection by Kawabata et al. [44, 45]. Analysis was made that beneath the conventional control of guide vane opening, there was swapping of energy between the rotating mass and

the water column upstream then downstream the pump-turbine. As a result of these energy transfers, the pump-turbine should have recurrently tracked down and up the S-shaped characteristics producing extraordinary pressure along with discharge oscillations, until it settled to the speed-no-load condition at the end.

4. Misaligned Guide Vane (MGV)

This practice was initially implemented on COO II (Belgium) pump turbines, in reducing the S-shaped characteristics [46]. There was advancement in the start-up instability in providing for the opening of two individual guide vanes through special linkages as well as two additional small servomotors, to an accurately determined pre-opening angle. In china, quite a lot of pumped-storage stations have witness the efficiency in stabilizing the turbine start-up and load rejection processes demonstrated by this kind of device with misaligned guide vanes (MGV). for example, [47, 48, 58], [49], and many others. It has been

pointed out that attention must be paid to continuously monitoring the status of the pre-opened guide vanes to circumvent likely control errors. The use of MGCV also made the controls system complex, increasing structural vibration, and quickening the decline of the seal ring of the inlet valve. Fig. 16 equates guide vane opening distribution among using MGCV (with four pre-opened guide vanes) and synchronous guide vanes [50]. The experimental formula has been developed for runaway and zero-flow conditions. There was a confirmation in the usability of this fast prediction method in engineering practice in the site tests in Tianhuangping pumped storage plant. Liu *et al.* [51, 52] and [53] established through experimental and CFD calculations, that through the by utilization of four pre-opened guide vanes, great enhancement was observed in the S-shaped characteristics of a model pump-turbine. In the study of the effect of MGCV on the pressure fluctuation in vaneless space among the runner and the guide vanes It is suggested that the instability of the force in the radial force increases as the shaft runner simulates the collapse of the symmetrical flow structure compared to the case of synchronized guide vanes Xiao *et al.* a substantial reduction close to synchronous opening guide vanes through a numerical prediction was made by [54, 55]. There are reports from other researchers indicating that the pressure fluctuations close to the misaligned opening guide vanes augmented [56, 57].

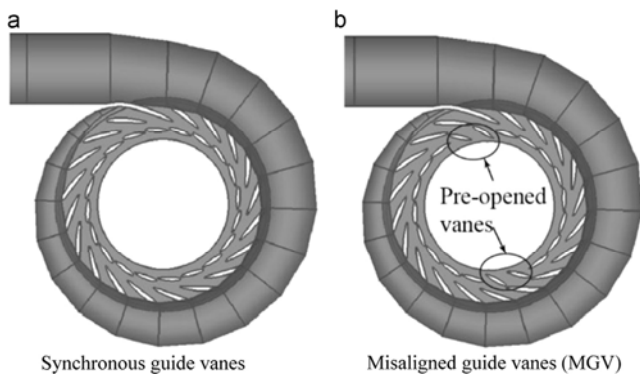


Figure 7. Openings of guide vanes (a) Synchronous guide vanes. (b) Misaligned guide vanes (MGV). [58].

5. Conclusion and Ways Forward

A comprehensive review study has been done on the Numerical Analysis and Experimental studies on the S-shaped characteristics of a pump turbine model. The design criteria, Experimental studies, Specifications of Pump turbine and Impact of Parameters on S-shaped characteristics have been explained, with conclusions on the results below.

- (1) It was pointed out that the pressure fluctuations in the guide vane channels stood very severe than in the spiral casing experimental results have showed that there was a rise of the pressure fluctuation around the S-shaped characteristics as well as the reverse pumping mode.
- (2) Guide vane opening at speed no-load conditions, the slope of the Q_{11} n_{11} characteristics generally goes up with cumulative guide vane opening. Hence, the risk of

unsteadiness increases with decreasing head.

- (3) An intelligent governor provided with an anti-S characteristics control has been recognized for improving the performance of transient of the pump turbine beneath load rejection. Analysis was made that beneath the conventional control of guide vane opening, there was swapping of energy between the rotating mass and the water column upstream then downstream the pump-turbine.
- (4) Operational conditions, such as guide vane opening and cavitation condition, along with a number of runner geometric parameters, particularly the leading-edge shapes of the runner, leading edge parameters, are recognized to have impacts on the S-shaped characteristics shape.

In spite of these outcomes more work is still needed since there are unstable integrally flows at off-design situations even though good results were obtained. Further studies should be focused on the characteristics of off-design conditions as well as Analysis of the Pump-turbine S Characteristics.

References

- [1] Olimstad G., Nielsen T., Børresen B., (2012 a), Dependency on runner geometry for reversible pump turbine characteristic in turbine mode of operation, *J Fluids Eng.*, vol. 134, pp. 121102-1/9.
- [2] Zhou J. X., Karney B. W., Xu J. C., (2011), Analytical study on possible self-excited oscillation in S-shaped regions of pump turbines, *P I Mech Eng. A – J POW*, vol. 225 (8), pp. 1132-1142.
- [3] Gentner C., Sallaberger M., Widmer C., Braun O., (2012), Analysis of unstable operation of pump turbines and how to avoid it, *HYDRO 2012 Innovative Approaches to Global Challenges*, 29-31 October 2012, Bilbao, Spain.
- [4] Pejovic S., Zhang Q., F., Karney B., Gajic A., (2011), Analysis of pump-turbine S instability and reverse water hammer incidents in hydropower systems, *4th Int Meeting on Cavitation and Dynamic problems in Hydraulic Machinery Systems*, October 2011, Belgrade, Serbia.
- [5] Seidel U., Koutnik J., Martin G., S-curve characteristic of pump-turbines, *HYDRO 2012 Innovative Approaches to Global Challenges*, 29-31 October 2012, Bilbao, Spain.
- [6] Wang L Q, Yin J L, Jiao L *et al.*, (2011), Numerical investigation on the “S” characteristic of a reduced pump turbine model, *Sci China Ser E*, vol. 54 (5), pp. 1259-1266.
- [7] Sun H., Xiao R., Liu W., Wang F., (2013), Analysis of the S characteristic and pressure pulsation in a pump turbine with misaligned guide vanes, *J Fluids Eng.*, vol. 135 (5), pp. 051101-1/6.
- [8] Brennen C. E., (1994), *Hydrodynamics of pumps*, Oxford University Press, Oxford, England.
- [9] Hasmatuchi V., Farhat M., Roth S., Botero F., Avellan F., (2011 a), Experimental evidence of rotating stall in a pump turbine at off design conditions in generating mode, *J Fluids Eng.*, vol. 133 (5), pp.051104-1/8.

- [10] Hasmatuchi V., Farhat M., Roth S., Botero F., Avellan F., (2011 b), Hydrodynamics of a pump turbine at off design conditions in generating mode: experimental investigation, SHF Conference on Cavitation and Hydraulic Machines, 26-27 May 2011, Lausanne, Switzerland.
- [11] Senoo Y, Yamaguchi M. A study on unstable S-shape characteristic curves of pump turbines at no-flow. *J Turbomachine* 1987; 109/77:77–82.
- [12] Kubota T, Kushimoto S. Visual observation of internal flow through high-head pump-turbine. *Fuji Electr Rev* 1978; 26 (4):133–44, UDC 621.224.7:532.52.
- [13] Yamaguchi M, Hayami H. Utilization of a VTR for flow visualization in the rotor of a pump turbine. *J Flow Vis Soc Jpn* 1990; 10 (1):143–6 in Japanese.
- [14] Hayami H, Yamaguchi M. Flow in the Tandem cascade impeller of a pump turbine with and without S-shape characteristics. *J Flow Vis Soc Jpn* 1990; 10 (1):147–50 in Japanese.
- [15] Hayami H, Chen DX, Koso T. Application of image processing measurement to a relative flow in a pump-turbine runner. *J Flow Vis Image Process* 1995; 2 (1):75–82. <http://dx.doi.org/10.1615/JFlowVisImageProc.v2.i1.60>.
- [16] Chen D. X., Hayami H., Koso T., Wang R. T. Flow patterns in a pump-turbine runner analyzed by an image processing technique. In: *Proceedings of the 4th Asian international conference of fluid machinery*, Vol. I; 1993. p. 311–316.
- [17] Chen DX, Xie H. The flow patterns of low specific speed pump- turbine in S-shape characteristic region. *J Hydraul Eng.* 2001; 32 (2):76–8 in Chinese.
- [18] Hasmatuchi V., Roth S., Botero F., Avellan F., Farhat M. High-speed flow visualization in a pump-turbine under off-design operating conditions. In: *Proceedings of the 25th IAHR symposium on hydraulic machinery and systems*, Timisoara, Romania, September 2010: 20–24, IOP Conf. Series: Earth and Environmental Science. Vol. 12; 2010. p. 012059. DOI:10.1088/1755-1315/12/1/ 012059.
- [19] Nicolet C, Alligne S, Kawkabani B. Stability Study of Francis Pump- Turbine at Runaway. Brno: IAHR, 2009.
- [20] Zhang J, Hu J, Hu M, et al. Study on the Reversible Pump-Turbine Closing Law and Field Test. Miami: American Society of Mechanical Engineers, 2006.
- [21] Xu L. Investigation on Internal Flow Visualization and Image Processing Method in Pump Turbine. Dissertation of Doctoral Degree. Zhengzhou: North China University of Water Resources and Electric Power, 2002.
- [22] Hasmatuchi V, Farhat M, Maruzewski P, et al. Experimental Investigation of a Pump-Turbine at Off-Design Operation Conditions. Brno: IAHR, 2009.
- [23] Pettersen K, Nielsen T K, Billdal J T. An explanation to the steep speed-flow characteristics of rpts. Stockholm: IAHR, 2004.
- [24] Tani K, Okumura H. Performance improvement of pump-turbine for large capacity pumped storage plant in UAS. *Hitachi Rev*, 2009, 58: 198–202.
- [25] Keck H, Michler W, Weiss T. Recent Developments in the Dynamic Analysis of Water Turbines. Timisoara: IAHR, 2007.
- [26] Bjarne J B, Sverre K D. Numerical Computation of the Pump Turbine Characteristics. Lausanne: IAHR, 2002.
- [27] Staubli T, Senn F, Sallaberger M. Instability of pump-turbines during start up in the turbine mode, *Hydro 2008*, Ljubljana, Slovenia.
- [28] Liang Q, Keller M, Sick M. Rotor-stator interaction during no load operation of pump-turbines. *Hydro 2009*, Lyon, France, Paper No. 7.08.
- [29] Liu JT, Guo L, Liu SG, Wang LQ, Jiao L. Characteristics study of pump-turbine at reverse pump conditions. *Water Resour Power* 2011; 29 (8):131–6 in Chinese.
- [30] Wang LQ, Yin JL, Jiao L, Wu DZ, Qin DQ. Numerical investigation on the “S” characteristics of a reduced pump turbine model. *Sci China-Technol Sci* 2011; 54 (5):1259–66. <http://dx.doi.org/10.1007/s11431-011-4295-2>.
- [31] Li J, Wang L, Liao WL. Internal flow characteristics analysis on S-shaped region of reversible pump-turbine. *Trans Chin Soc Agric Eng.* 2014; 30 (15):106–13 in Chinese.
- [32] Ji XY, Lai X. Numerical simulation of the S-shaped characteristics of the pump turbine. *Chin J Hydrodyn* 2011;26 (3):318–26 in Chinese.
- [33] Senn F, Guggenberger M, Schiffer J, Jaberg H. PIV ales experimentally Method für die Erklärung der S-Schlag Instabilität von Pump turbine n. *Lasermethoden in der Strömungsmesstechnik*, Sep. 3–5; 2013, München. [in German].
- [34] Guggenberger M., Senn F., Schiffer J., Jaberg H., Gentner C., Salla Berger M., Widmer C. Experimental investigation of the turbine instability of a pump turbine during synchronization. In: *Proceedings of the 27th IAHR symposium on hydraulic machinery and systems (IAHR 2014)*, IOP conference series: earth and environmental science. Vol. 22; 2013. p.032015, DOI:10.1088/1755-1315/ 22/3/032015.
- [35] Guggenberger M, Senn F, Schiffer J, Jaberg H, Sallaberger M, Widmer C. Investigating the dynamic aspects of the turbine instability of a pump turbine model. In: *Proceedings of the 6th IAHR international meeting of the workgroup on cavitation and dynamic problems in hydraulic machinery and systems*. September 9–11; 2015: Ljubljana, Slovenia.
- [36] Nielsen TK, Olimstad, G. Dynamic behavior of reversible pump-turbines in turbine mode of operation. In: *Proceedings of the 13th international symposium on transport phenomena and dynamics of rotating machine*: Honolulu, HI; 2010.
- [37] Olimstad G, Nielsen T, Børresen B. Stability limits of reversible-pump turbines in turbine mode of operation and measurements of unstable characteristics. *J Fluids Eng.* 2012; 134 (11):111202–9. <http://dx.doi.org/10.1115/1.4007589>.
- [38] Olimstad G, Børresen B, Nielsen TK., A two-dimensional model for pump turbine instability investigation. In: *Proceedings of the 14th international symposium on transport phenomena and dynamics of rotating machine*: Honolulu, HI; 2012.
- [39] Mesnage H, Alamir M, Perrissin-Fabert N, Alloin Q, Bacha S. Hydraulic-turbine start-up with ‘S-shaped’ characteristic. *European Control Conference*; Jul 2015, Linz, Austria.
- [40] Zhu BS, Wang XH, Tan L, Zhou DY, Zhao Y, Cao SL. Optimization design of a reversible pump-turbine runner with high efficiency and stability. *Renew Energy* 2015; 81:366–76. <http://dx.doi.org/10.1016/j.renene.2015.03.050>

- [41] Yin JL, Wang DZ, Wei XZ, Wang LQ. Hydraulic improvement to eliminate S-Shaped curve in pump turbine. *J Fluids Eng.* 2013; 135/071105:071105-1–6. <http://dx.doi.org/10.1115/1.4023851>
- [42] Liu WC, Zheng JS, Chen J, Shi QH. Optimization of the S-shaped characteristics of the pump-turbine of Xianju pumped storage power station. In: *Proceedings on the Engineering Construction of Pumped Storage Power Stations*; 2013. p. 148–152. [in Chinese].
- [43] Kuwabara T, Okumura H., Method of controlling wicket gates of a pump turbine, US Patent 4382745, May 10, 1983.
- [44] Kuwabara T., Katayama K., Nakagawa H., Hagiwara H. Improvements of transient performance of pump turbine upon load rejection. *Power Eng. Society Summer Meeting (Seattle, WA, USA) IEEE.* Vol. 3, p. 1783–88, 2000. DOI: 10.1109/PESS.2000.868803.
- [45] Klemm D. Stabilisierung der Kennlinien einer Pump turbine im Bereich zwischen Turbinen-Teillast und Rückwärtspumpenbetrieb. *Voith Forsch Konstr* 1982; 28 (2):2.1–7 in German.
- [46] Swed RJ, Yang KH. Experiences on startup and trial operation at Yards Creek pumped storage project. *J Fluids Eng.* 1969; 91 (3):387–95.
- [47] He SR. Application of MGv in Tianhuangping power station. *Mech Electric Tech Hydropower Stn* 2001; 1:1–5 in Chinese.
- [48] Ma MG. Analysis of unsuccessful synchronization at low head conditions of a pump-turbine unit. *Electromechanical. Technol Hydropower Stn* 2002; 2:37–9 in Chinese.
- [49] Cheng YS. The damage of S characteristic area of pump-turbine and its counter measure. *Water Power* 2008; 34 (6):70–3 in Chinese.
- [50] Li. HB. Application of MGv in pumped storage power plant. *Mech Electric Tech Hydropower Stn* 2008; 33 (1):15–6 in Chinese.
- [51] Zuo ZG, Liu SH, Sun YK, Wu YL. Pressure fluctuations in the vaneless space of high-head pump-turbines—review. 2015.
- [52] Liu JT, Zuo ZG, Liu SH, Wu YL. Numerical prediction of “S” characteristics of a high-head pump-turbine with misaligned guide vanes. In: *Proceedings of the 12th Asian International Conference on Fluid Machinery.* 25–27 September: Yogyakarta, Indonesia. Paper ID: AICFM12-0001.
- [53] Liu ZQ, Sun H, Xiao RF, Liu WC. S-shaped characteristics of pump-turbine and improvement on its performance. *J Hydroelectric Eng.* 2013; 32 (2):257–60 270. (in Chinese).
- [54] Xiao RF, Sun H, Liu WC, Wang FJ. Analysis of S characteristics and its pressure pulsation of pump-turbine under pre-opening guide vanes. *J Mech Eng.* 2012; 48 (8):174–9 in Chinese.
- [55] Xiao YX, Sun DG, Wang ZW. Numerical analysis of unsteady flow behavior and pressure pulsation in pump turbine with misaligned guide vanes. In: *Proceedings of the 26th IAHR symposium on hydraulic machinery and system.* Beijing, China; 2012.
- [56] Xiao YX, Wang ZW, Zhang J, Luo YY. Numerical predictions of pressure pulses in a Francis pump turbine with misaligned guide vanes. *J Hydrodyn* 2014; 26 (2):250–6. [http://dx.doi.org/10.1016/S1001-6058\(14\)60028-7](http://dx.doi.org/10.1016/S1001-6058(14)60028-7).
- [57] Liu DM, Zheng JS, Shi QH. Numerical simulation on the “S” characteristics and pressure fluctuation of reduced pump-turbine at start-up condition. In: *Proceedings of the 26th IAHR symposium on hydraulic machinery and system.* Beijing, China; 2012.
- [58] Liu JT, Liu SH, Sun YK, Wu YL, Wang LQ. Prediction of pressure fluctuation of a pump-turbine at no-load opening. *J Eng. Thermophys* 2012; 33 (3):411–4 in Chinese.